

The Cumberland Initiative
TRANSFORMING HEALTHCARE QUALITY AND COSTS

Cumberland Institute

163 Bestobell Road , Slough

D4 B Studio Feasibility Study



Cumberland Initiative

Cumberland Institute vision is to create a platform where clinicians, healthcare related academics and managers, industry, commerce and technology **connect to develop and exchange ideas and test the systems** without disturbing business continuation.

Cumberland Institute Hub

The aim of the project is to create **thriving, functional and in demand collaborative environment** for individuals and organisations involved in healthcare simulation and modelling.



Premises at 163 Bestobell Road provide opportunity for:

- collaborative working environment
- accessible meeting space
- training, workshops and conferences
- large scale exhibitions and simulations





The Cumberland Institute Hub will develop in 3 stages

Stage 1

Development Hub ●

Training Centre ●

start February 2015

Stage 2

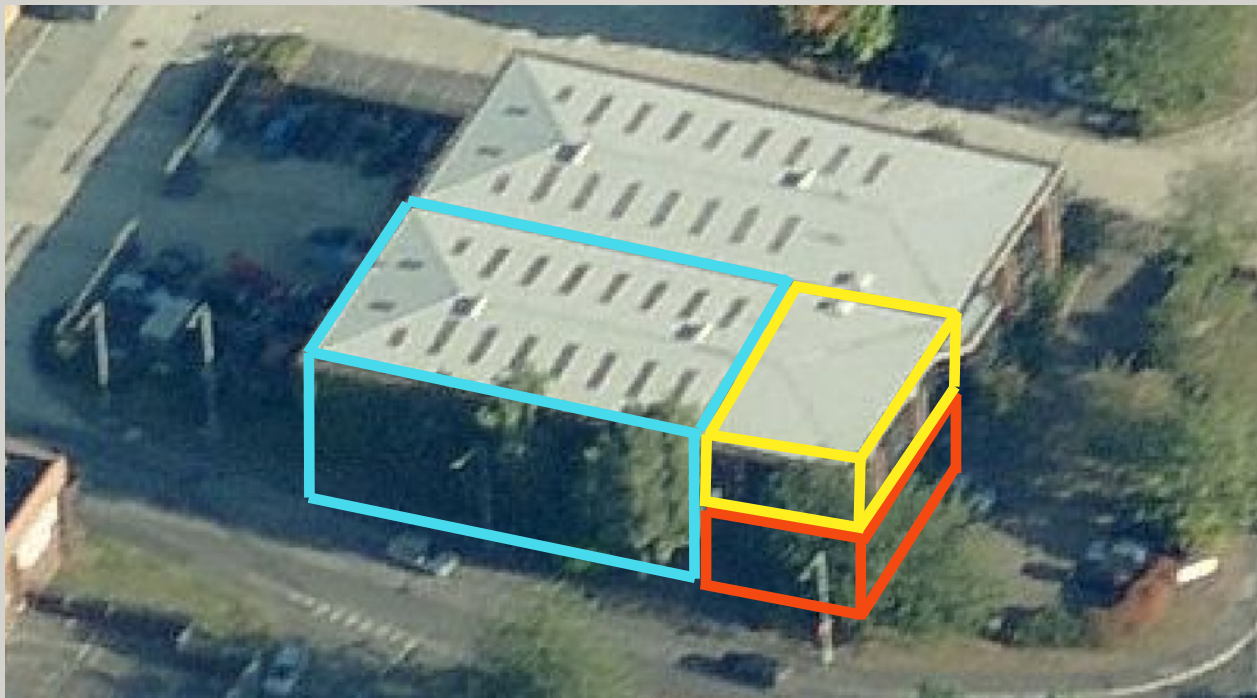
Simulation Laboratory

Adaptation of the Warehouse for flexible event space
- mid 2015

Stage 3

National Healthcare Simulation Centre ●

further adaptation of both office block and warehouse for national studies, shows and programs



Stage 1: Development Hub

Function:

Flexible modern working space for short and medium length projects developed in collaborative environment

Users:

Cumberland Institute members clinicians, academics, industry and commerce representatives, small companies

Advantages:

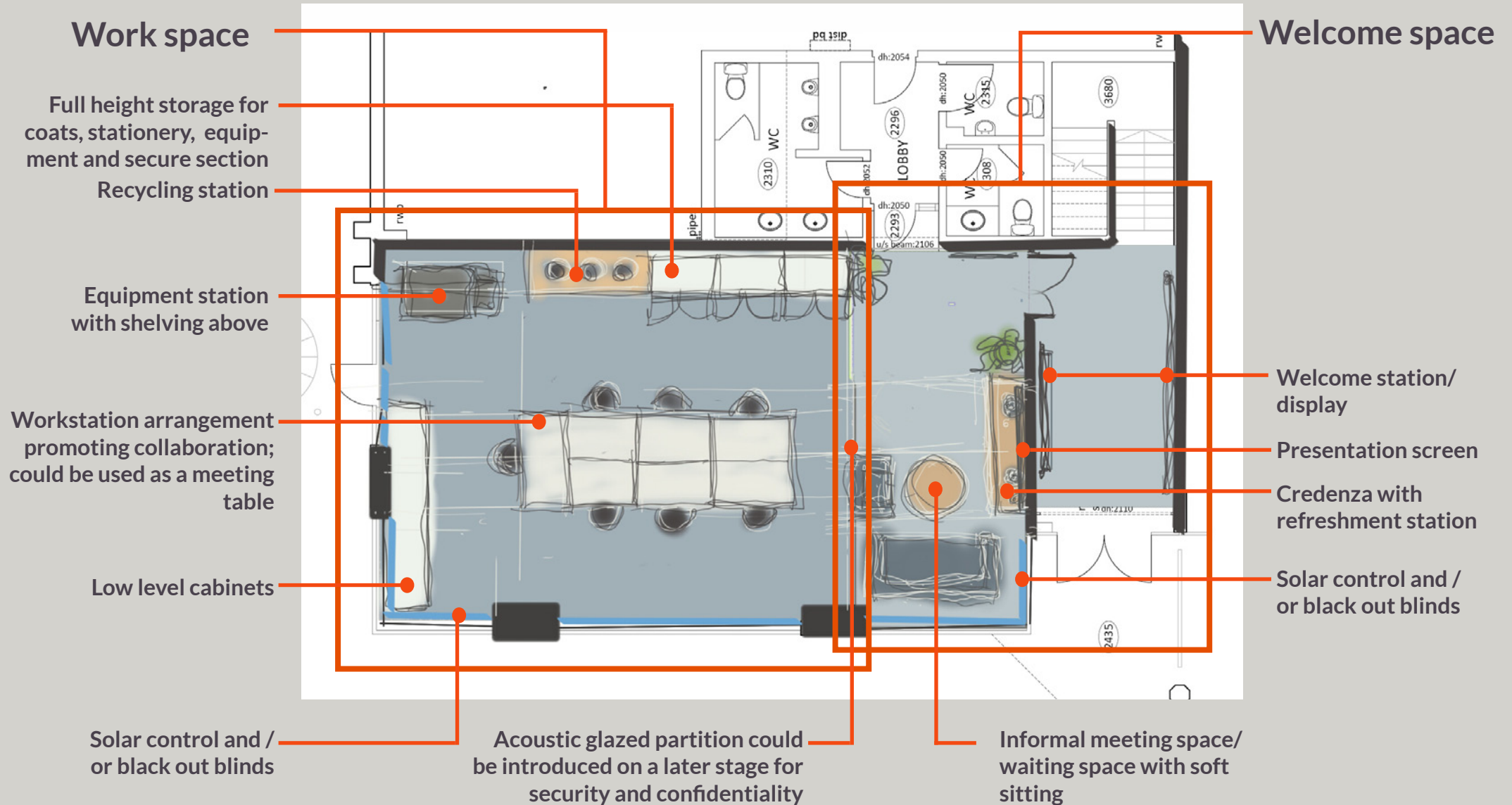
network opportunities, connectivity to the newest technologies and access to university resources

Attributes:

adaptability to needs of individual users and small teams, ease of re-configuration, security, informal meeting space and welcoming character



Stage 1: Development Hub



Stage 1: Training Centre

Function:

flexible training, presentation and meeting space for exchange of ideas and workshops

Users:

Cumberland Institute members, businesses and institutions involved in healthcare simulation and modelling

Advantages:

network and marketing opportunities, exposure to industry leaders, high quality and welcoming environment

Attributes:

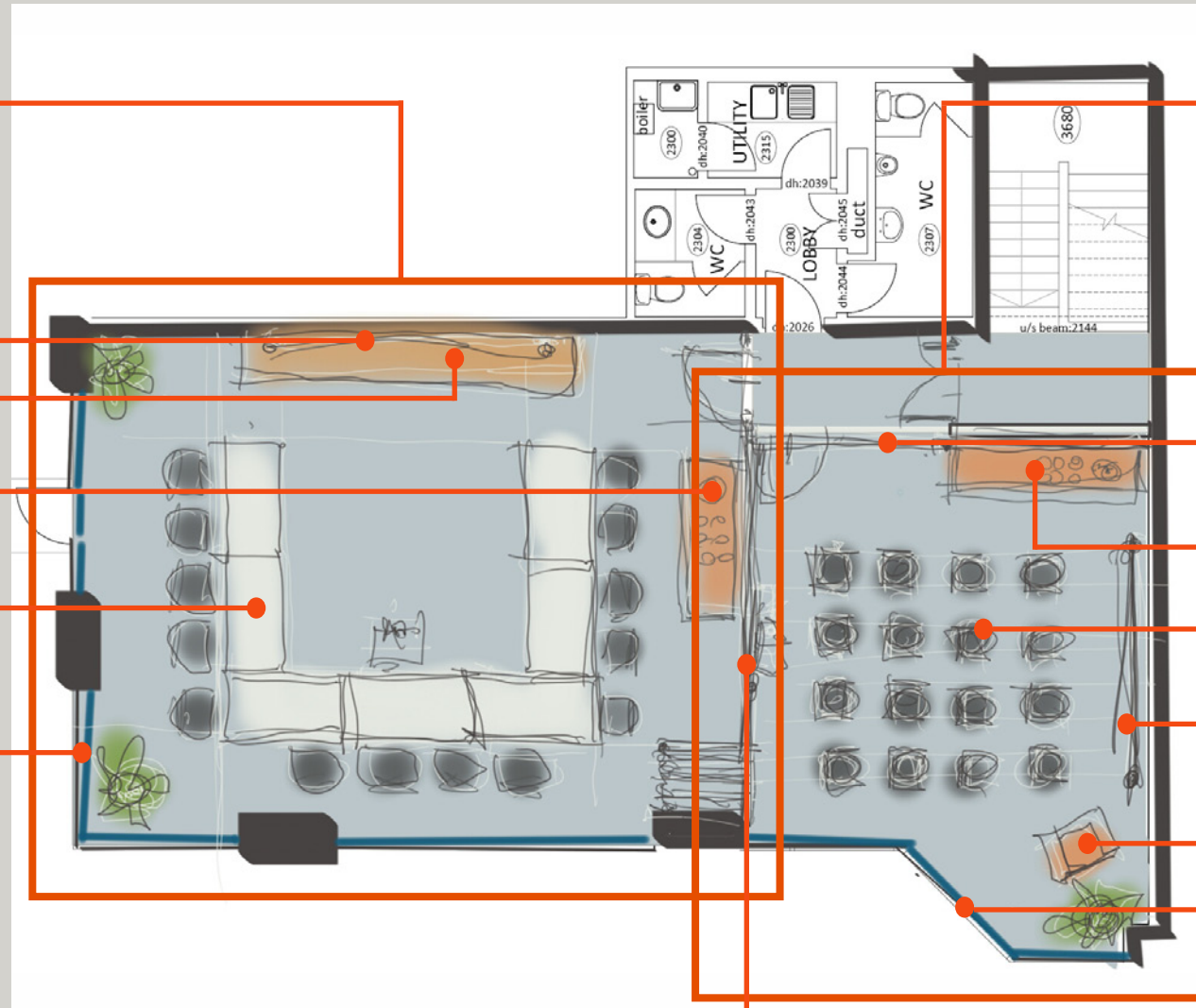
adaptability for events of various characters, sizes and audiences, flexible layout, amenities for whole day use



Stage 1: Training Centre

Training Room 1

Training Room 2



Presentation screen

Credenza

Movable refreshment station

Flexible and easy to store tables and chairs

Solar control and black out blinds

Sliding acoustic partition

Refreshment station

Stackable chairs

Presentation screen

Pedestal

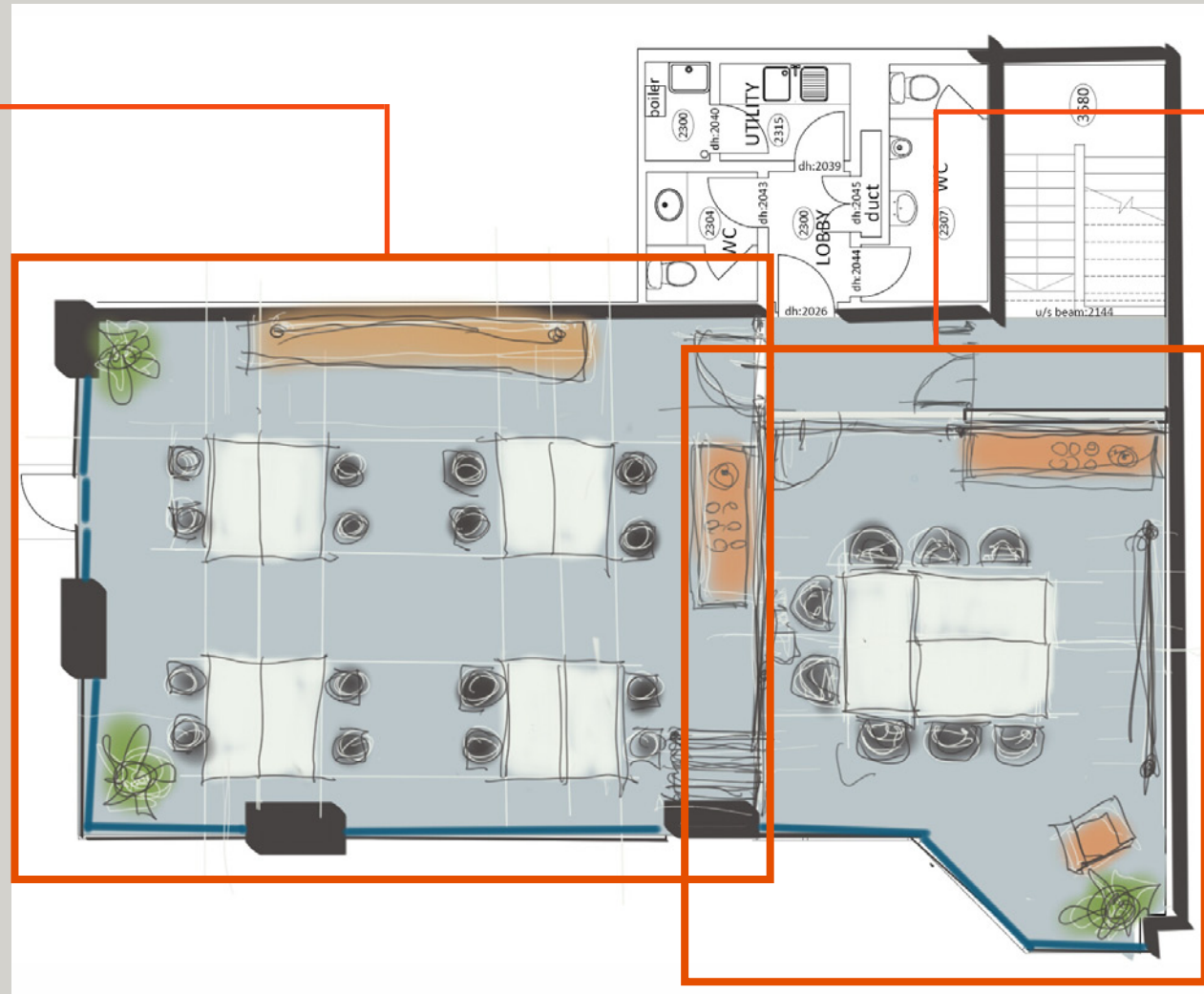
Solar control and black out blinds

Sliding-folding acoustic partition

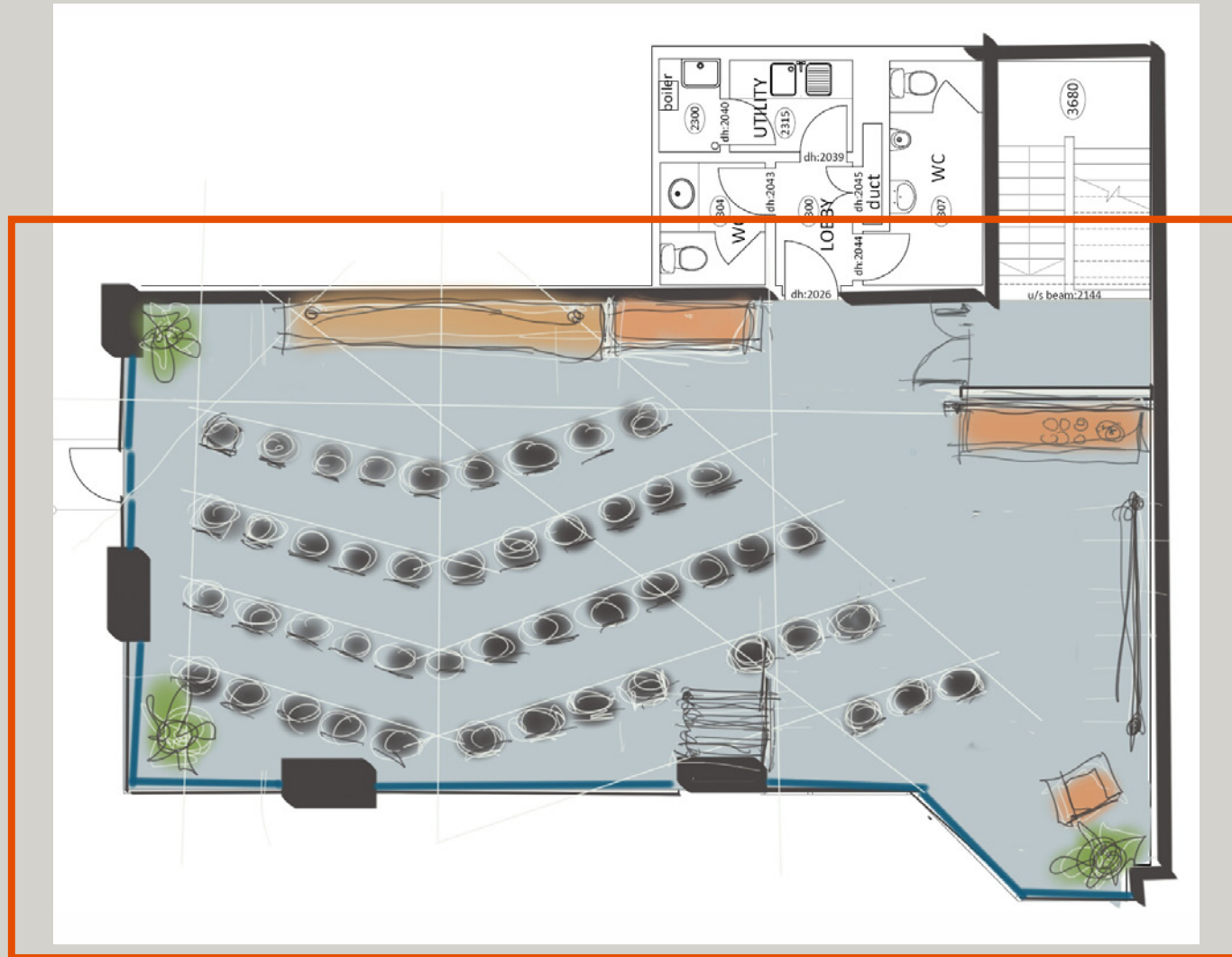
Stage 1: Training Centre

Training Room 1

Training Room 2



Stage 1: Training Centre



One large training room with both partitions folded away

Stage 2: Simulation Laboratory

Healthcare simulations and modelling
Virtual 2d and 3d projections



Stage 2: Simulation Laboratory

Healthcare simulations and modelling - Traditional exhibitions and displays



Stage 2: Simulation Laboratory

Healthcare simulations and modelling
Traditional models



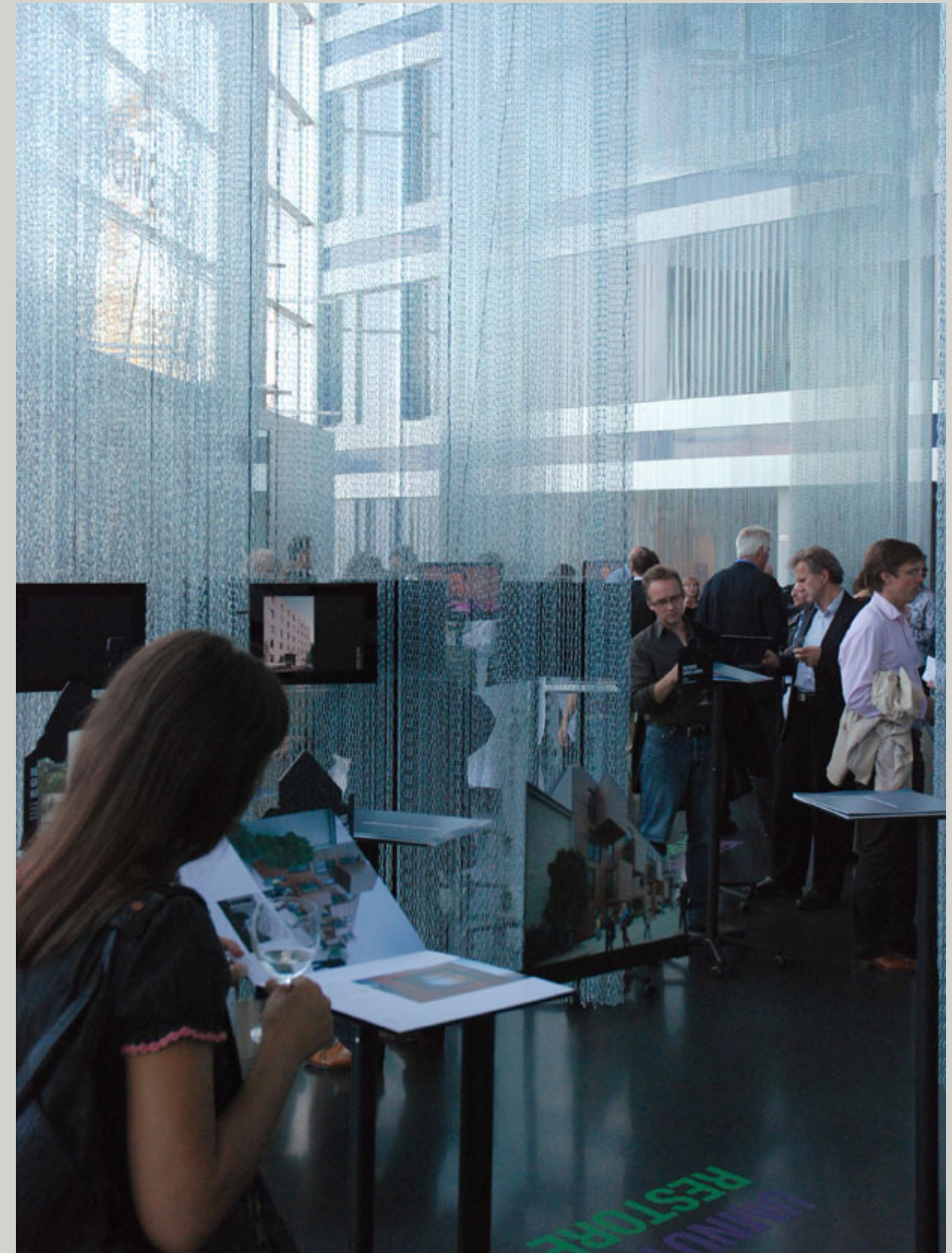
Stage 2: Simulation Laboratory

Healthcare simulations and modelling- Mock-ups



Stage 2: Simulation Laboratory

Healthcare simulations and modelling
Open plan work and training space,
presentations and workshops



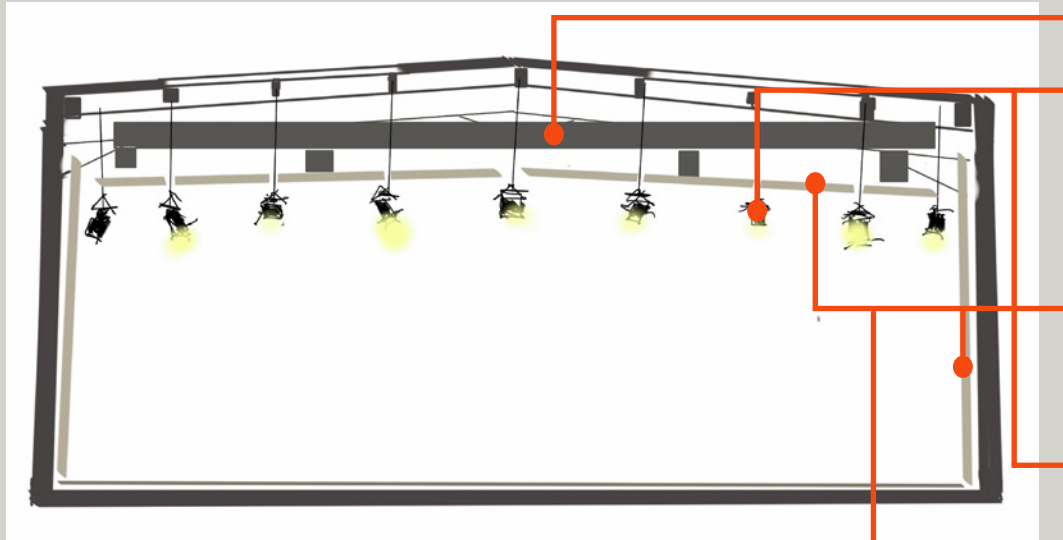
Stage 2: Simulation Laboratory

Healthcare simulations and modelling- Conferences, presentations and workshops

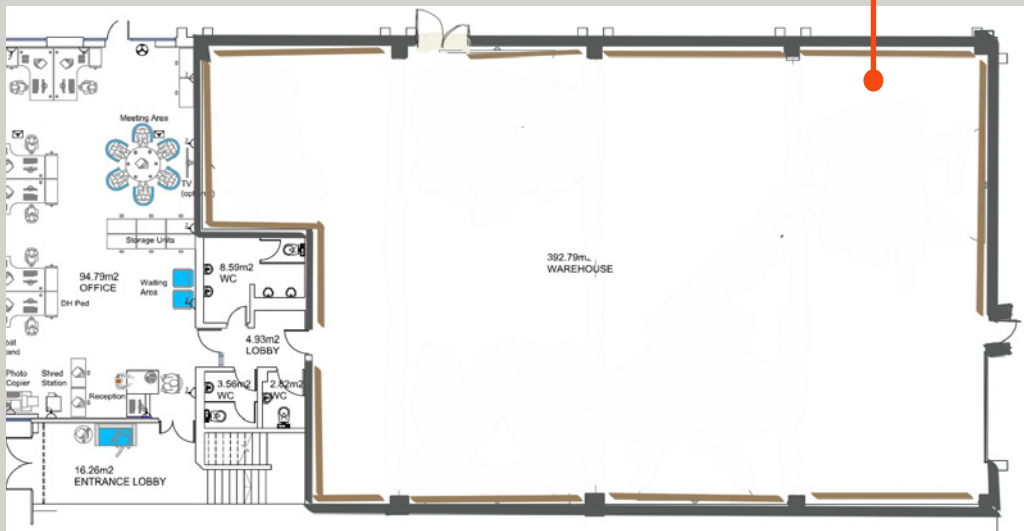


Stage 2: Simulation Laboratory

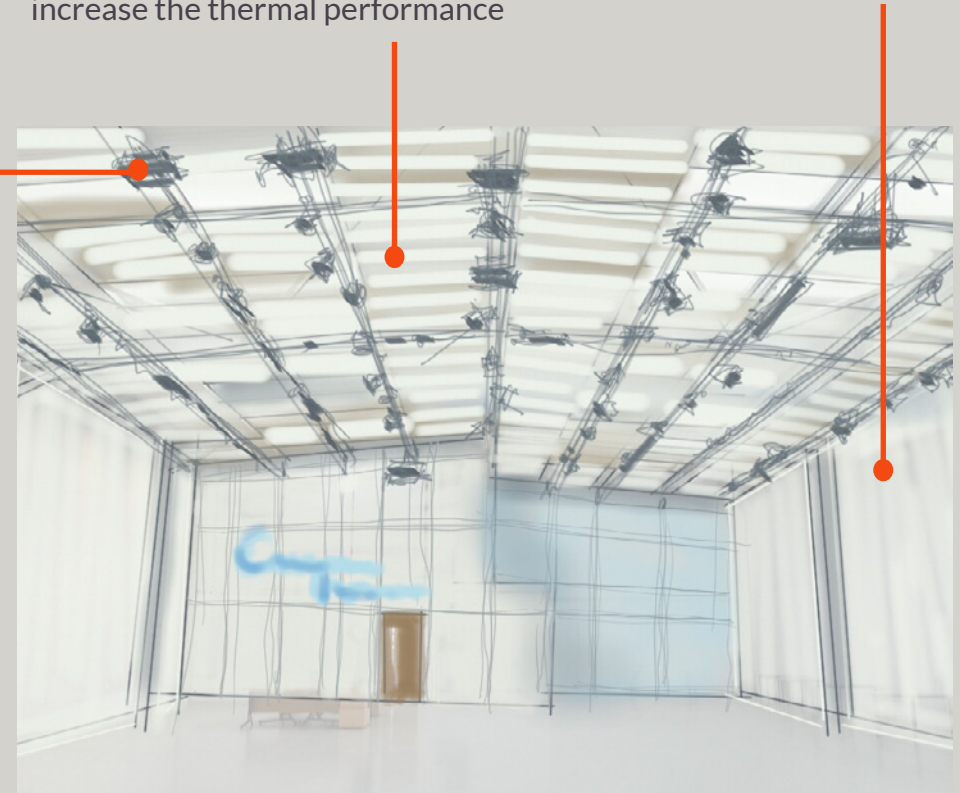
Sketch section



1. HVAC system below existing roof
2. Lighting, projectors and other equipment suspended from existing and new secondary structure if required
3. Acoustic panels to the wall perimeter and acoustic suspended ceiling; these elements should be integrated with building energy strategy to increase the thermal performance



Sketch plan



Sketch perspective

Stage 2: Simulation Laboratory

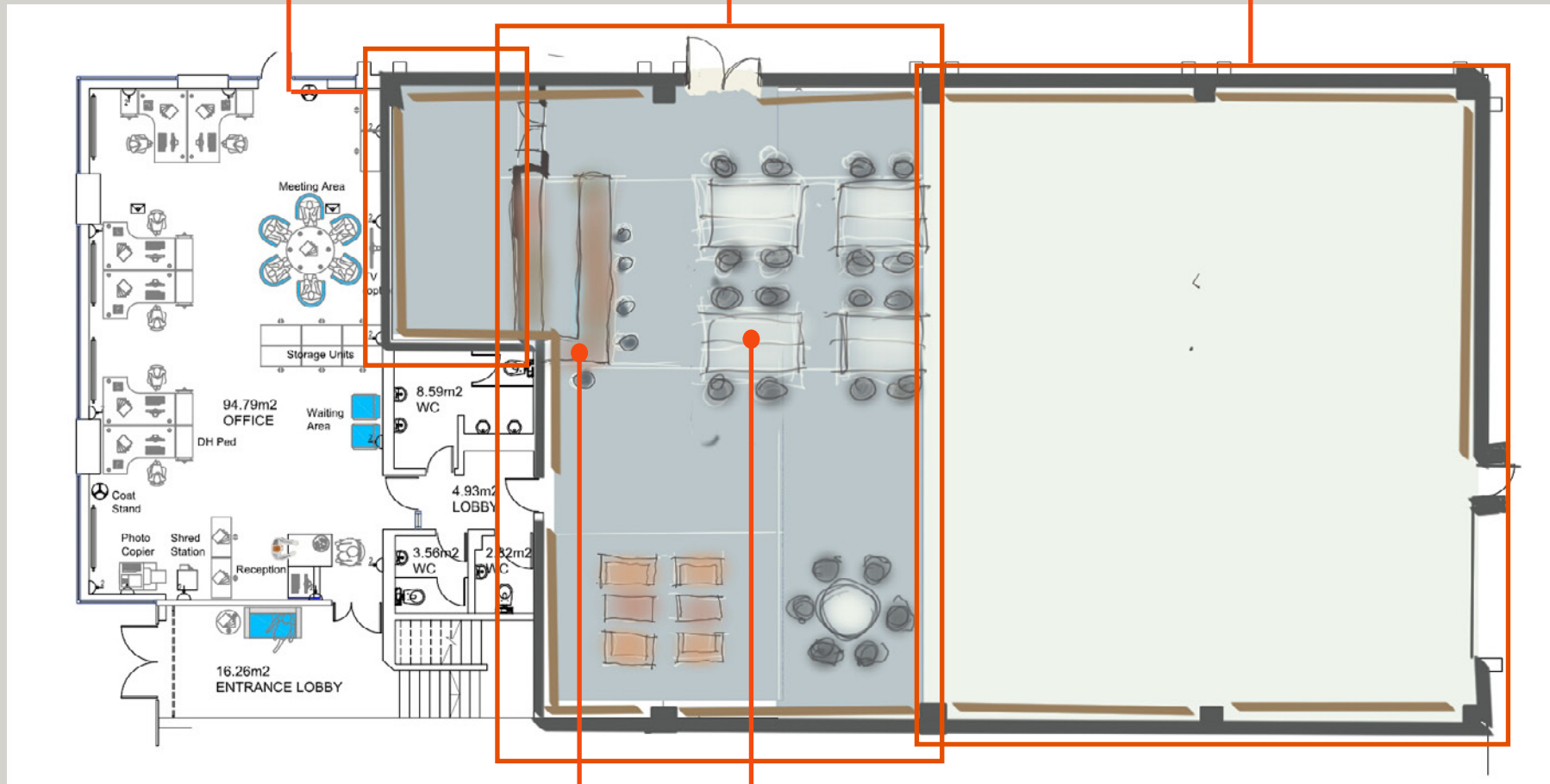


Stage 3: National Healthcare Simulation Centre

Auxiliary space

Welcome space with
breakout area

Open plan activity space



Breakout area with bar

Flexible sitting

Stage 3: National Healthcare Simulation Centre



Stage 3: National Healthcare Simulation Centre



Stage 3: National Healthcare Simulation Centre





D4B studio

LONDON

Architectural and Interior Design

D4B studio offers architectural services facilitating transition of conceptual ideas into detailed proposals to accelerate the design process and evaluate design options by reducing the number of iterations and associated costs. Our unconstrained, technology driven and innovative approach to architectural and interior design enables us to provide tailored solutions, for both corporate and private clients.

www.d4bstudio.com

info@d4bstudio.com